



**Exhibition Carpet Collection 2020**

# AM BEST



C-235White

Silverado

1426 L.Sage

13 ALE Green

Off White

Sun Burst

Sage

H.Blue

KH Cream

Orange

321 Red

Doral Blue

B.Beige

Had-O6

C.Rose

628

Black

K.Blue

Construction	: Cut Pile Tufted Carpet	Total Weight	: ± 1450 g/m <sup>2</sup>	Total Thickness	: 9.0mm
Pile yarn	: Polyester	Primary Backing	: Woven Polypropylene	Dyeing Method	: Piece Dyed Yarn
Pile Height	: 7mm	Secondary Backing	: Action Back		
Stitches	: 43.0 /10 cm	Latex Coating	: 750 gr/m <sup>2</sup>		
Tuft Length	: 19.0 mm	Origin	: Made in K.S.A		

# PLUSH



Off White-620



Beige-680



Brown-800



Silver-940



Light Gray-950



Dark Grey-970



Sky Blue-350



Lime Green-450



Gold-250



Rose-540



Purple-580



Wine-180



Brick-150

Manufacturing : Tufting 1/8" Cut pile

Composition : 100% LEONIS<sup>®</sup> PP

Primary Backing : Woven PP

Secondary Backing : Texflor<sup>®</sup> feltbacking

Pile Weight : ca. 580 gr/m<sup>2</sup>

Total Weight : ca. 1.420 gr/m<sup>2</sup>

Pile Height : ca. 7 mm

Total Height : ca. 9 mm

Tufted Density : ca. 110.250/m<sup>2</sup>

Water Resistance : 4-5

Thermal Resistance : TOG :1.1

Sound Insulation : 24dB

Fire Class : Efl (EN13501-1)

Origin : Made in Belgium

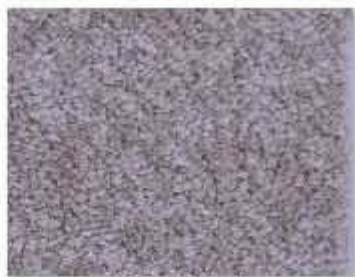
# GLOBAL



**322-White**



**329-Cream**



**424-L.Beige**



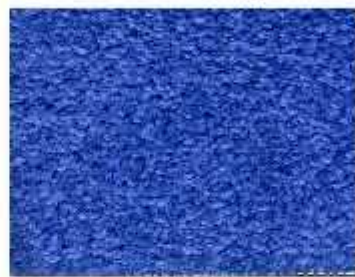
**921-Honey**



**412-D.Brown**



**213-Red**



**511-L.Blue**



**514-D.Blue**



**620-Green**



**723-Grey**



**084-D.Grey**



**728-Black**

Construction : Cut Pile  
Fiber : 100% Solution Dyed Olefin  
Gauge : 1/8"  
Dye Method : Solution Dyed  
Pile Height : 100 mm

Total Pile Height : 12 mm (+-5%)  
Tufted Weight/m2 : 750 gr/m2  
Total Weight /m2 : 1730 gr/m2  
Secondary Backing : Action Backing  
Origin : Made in UAE

# SPACE



White-600

Off White-620

Light Brown-680

Yellow-220

Honey-110

Red-170

Dark Blue-370



Brown-790



Light Grey-950



Dark Grey-980



Black-990



Light Blue-340



Coffee-890

**Manufacturing Process** : Tufting 1/8" Cutpile  
**Pile Content** : 100% PP Stalnsafe®  
**Primary Backing** : Woven PP  
**Secondary Backing** : Texflor® feltbacking  
**Pile Weight** : ca. 660 gr/m2  
**Pile Height** : ca. 5,5 mm  
**Total Weight** : ca. 1.650 gr/m2

**Total Height** : ca. 8 mm  
**Tuft Density** : ca. 102.375/m2  
**Water Resistance** : 4-5  
**Thermal Resistance** : TOG : 1.2  
**Sound Insulation** : 22 dB  
**Fire Class** : EFL (EN13501-1)  
**Origins** : Made in Belgium

# UNIVERSAL



**Construction** : Cut Pile  
**Fiber** : 100% Solution Dyed Olefin  
**Gauge** : 1/8"  
**Dye Method** : Solution Dyed  
**Pile Height** : 5.00 mm

**Total Pile Height** : 7.00 mm  
**Stitches per 10cm** : 28.0  
**Tufted Weight** : 450 gr/m<sup>2</sup>  
**Total Weight** : 1380 gr/m<sup>2</sup>  
**Secondary Backing** : Action Backed

**Origins** : Made in UAE

# NEEDLE PUNCH



**Composition** : 100% Polypropylene  
**Pile Inside** : Yes  
**Pile Height** : 3 mm  
**Fire Behaviour** : CFLS1

**Total Weight** : 750 g/m<sup>2</sup>  
**Flammability** : Cfl-S1 EN13501-1  
**Origin** : Made in Belgium

Standard available with Foil Protection.  
 Colors may slightly vary from Batch to batch.

# ALEX - 1



Alex-010 White



Alex-020 Cream



Alex-021 Sand



Alex-026 Cooper



Alex-030 L.Brown



Alex-031 D.Brown



Alex-022 Beige



Alex-023 Gold



Alex-034 M.Brown



Alex-090 L.Grey



Alex-091 D.Grey



Alex-099 Black



Alex-083 Voilet



Alex-040 Red



Alex-050 Blue

Construction : Loop Pile

Composition : 100% Polypropy lenf

Pile Weight : 280 g/m<sup>2</sup>

Pile Height : 3 mm

Total Weight : 1150 gr/m<sup>2</sup>

No. of Tufts : 168300/m<sup>2</sup>

Tufting Gauge : 1/10"

Primary Backing : Woven

Secondary backing: Action Back or Ultra Jute

Total height : 5.5 mm

Origin : Made In UAE



# HANEEN



**Haneen-590**



**Haneen-591**



**Haneen-545**



**Haneen-579**



**Haneen-572**



**Haneen-593**



**Haneen-557**



**Haneen-565**



**Haneen-521**



**Haneen-586**

**Construction** : Cut Pile  
**Composition** : 100% Olefin  
**Yarn Type** : Coller  
**Pile Height** : 8 mm  
**Pile Weight** : 550 gr/m2  
**Primary Backing** : Woven

**Total Pile Weight** : 1550 gr/m2  
**Tuft Density** : 72450/m2  
**Total Height** : 10 mm  
**Tufting Gauge** : 1/8"  
**Secondary Backing** : Action Back or Blue Felt  
**Origin** : Made in UAE

Due to Carpet Manufacturing Process mass specification are subject to (+) 5% variation  
 Shading or Pile Reversal is nature of cut pile carpet and is is not manufacturing defect  
 Color may slightly vary from one dye lot to another dye lot  
 We reserve to amend the above specification without prior notice due variables in raw material supplies

# PURE



Pure-107



Pure-155



Pure-131



Pure-335



Pure-152



Pure-159



Pure-331



Pure-964



Pure-992



Pure-447



Pure-440



Pure-455



Pure-898



Pure-897



Pure-849

**STAR**



**322-White**



**329 Cream**



**424-L.Belge**



**921-Honey**



**412- D.Brown**



**213-Red**



**511-L.Blue**



**514-D.Blue**



**610-Rose**



**723-Grey**



**084-D.Grey**



**728-Black**

# ROXANE

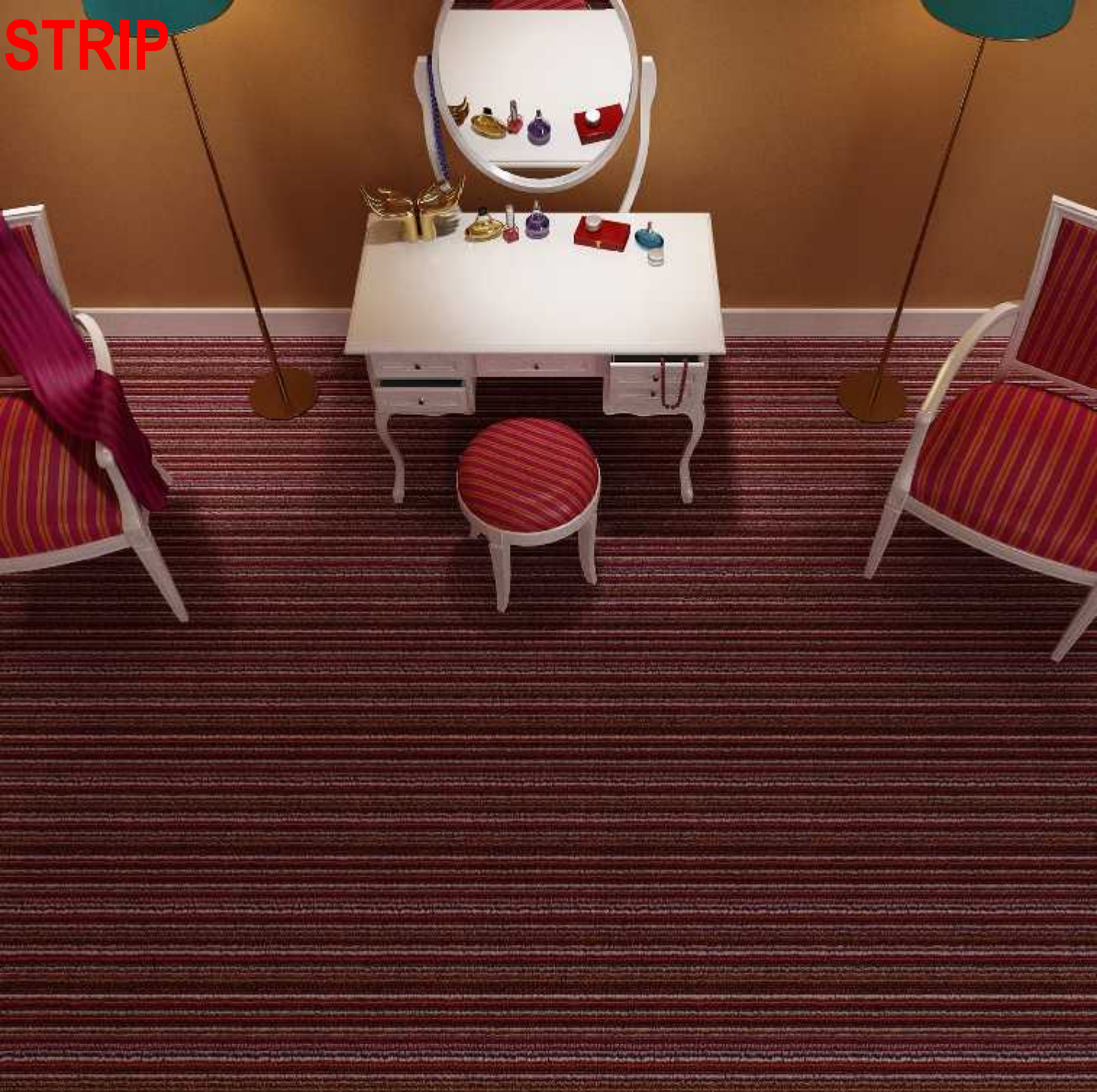


**Construction** : 1/10" Cut Pile  
**Composition** : 100% Nylon IMPREL  
**Pile Height** : 4 mm  
**Total Height** : 8 mm  
**Pile Weight** : 450 gr/m<sup>2</sup>

**Total Weight** : 1,400 gr/m<sup>2</sup>  
**Tufted Density** : 236 400  
**Fire Resists** : Cfl-s1 (EN 13501-1)  
**Floor Heating** : Suitable  
**Sound Insulation** : 28 dB delta Lw

**Origin** : Made in Belgium

# STRIP



346 Brown



325 Red



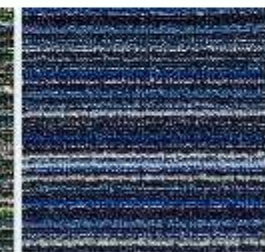
395 Beige



378 Grey



365 Green



355 Blue

Construction : Loop Pile  
Composition : 100% Polypropylene  
Pile Weight : 280 g/m<sup>2</sup>  
Pile Height : 3 mm  
Total Weight : 1150 gr/m<sup>2</sup>

No. of Tufts : 168300/m<sup>2</sup>  
Tufting Gauge : 1/10"  
Primary Backing : Woven  
Secondary backing: Action Back or Ultra Jute  
Total height : 5.5 mm  
Origin : Made in UAE

# FOCUS



880



680



620



600



950



990



380



325



460



195



540



140



120



260



270



920