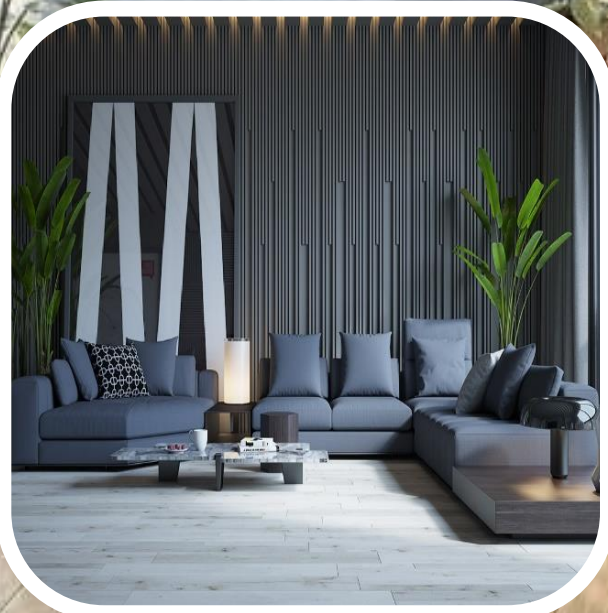
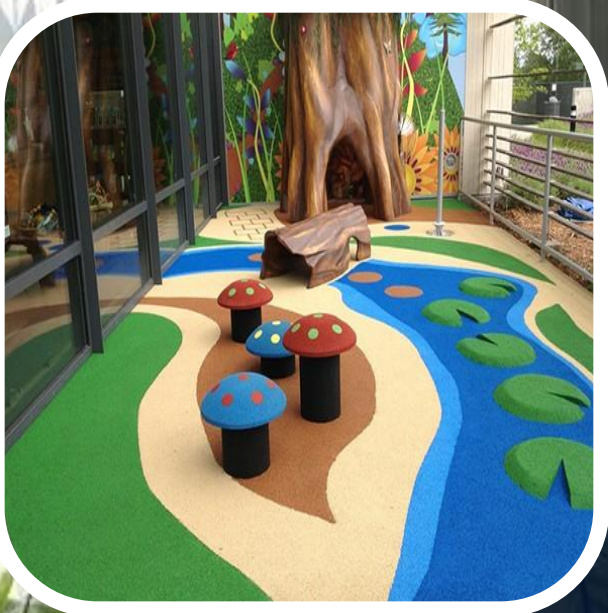


# ZAYAANCO

*A Complete Flooring Store.....*



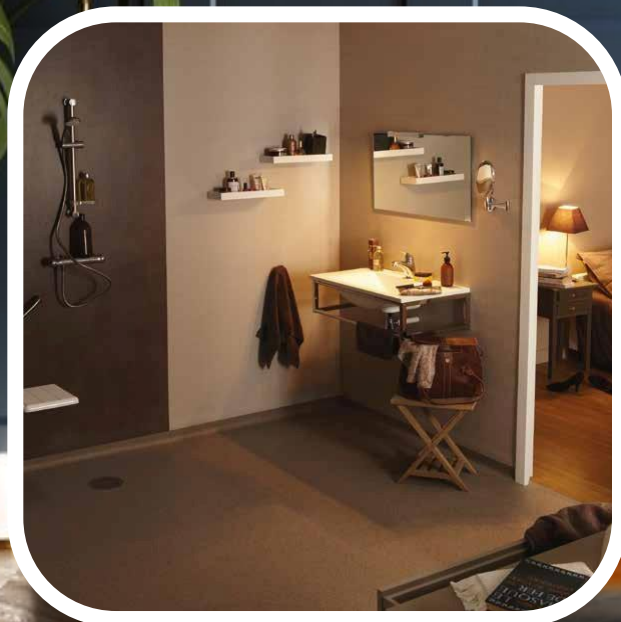
# ZAYAANCO



We ZAYAANCO is a leading supplier of all premium branded flooring products all over UAE and GCC. We provide world class products with superior quality and affordable prices. Our aim is 100% customer satisfaction and we achieve this by constantly reviewing our customer's feedback. Our satisfied customers are our asset. Under the guidance of our adept professionals, we provide prompt, reliable and flexible services to our clients. Our team is always there to help in every means to make our service even better and thus making our position as first in the market. Our company is dedicated in offering supreme quality products. Not only we supply flooring materials, we also undertake installation of these flooring products. ZAYAANCO is a one stop shop for all your flooring needs.



# OUR PRODUCTS & SERVICES



- **Wooden Floor**
- **Vinyl Floor**
- **EPDM Floor**
- **Sports Floor**
- **Floor Coatings**
- **ESD & Conductive Floor**
- **Wet Area & Safety Floor**
- **SPC & LVT Floor**
- **Carpet Floor**
- **Mosque Carpets**
- **Gym & Fitness Floor**
- **Rubber Floor**
- **WPC Decking Floor**
- **Raised Access Floor**
- **Underlays & Accessories**



# WOODEN FLOOR



## HARD WOOD FLOOR

It is a piece of wood from top to bottom, through its entire thickness. It is available as small planks of different designs according to the species of the wood and the stain given. It can be used in any areas and has the capacity to stand heavy traffic.

## ENGINEERED WOOD FLOOR

Engineered wood floorings are made up of several layers of wood fused together and finished with a hardwood veneer on the top. They are stable, durable and resistant to everyday wear and tear. It comes in a wide variety of domestic and exotic wood species, stains and surface treatments. It is available in planks of different thickness.

## LAMINATE WOOD FLOOR

Laminate flooring is a multi-layered synthetic flooring product fused together with a lamination process which resemble a real wood floor. It requires less skill to install and also it is cost effective. Laminate floorings are available in wide variety of patterns and colors and also in different width, length and thickness of planks.



# VINYL FLOOR



## **HOMOGENEOUS VINYL FLOOR**

Homogeneous Vinyl flooring is a non-layered, non-backed material making it one of the most durable and long-lasting flooring. Homogeneous flooring has a uniform structure and composition from the top to the bottom as there is no separate backing layer. It is frequently installed in healthcare facilities, medical institutions, educational institutions etc. because of its anti-bacterial and anti-static properties. Also, it is superior quality, highly durable and high resistance to wear cuts.

## **HETEROGENEOUS VINYL FLOOR**

Heterogeneous Vinyl flooring is a multi-layered flooring which comes in various patterns and designs. Based on the usage, heterogeneous flooring can be commercial and residential. It has many options and benefits and is coming in various thickness. Also, it provides excellent acoustic performance and has sound reduction properties. It is also affordable, durable, stain resistant and can create a perfect ambience where it is being installed. Heterogeneous floors are also used in healthcare centers, educational institutions, offices, resident spaces etc.



# EPDM FLOOR



EPDM is a synthetic elastomer known as Ethylene Propylene Diene Monomer. EPDM floorings are those which involves granules that are self-pigmented in nature and thus making it last longer. These EPDM granules can be then mixed with Polyurethane binders and can be sprayed onto concrete, asphalt, interlocking brick, wood etc. to create a non-slip, soft, porous and safety surface. EPDM floorings are customizable flooring solution for almost any application including health and fitness clubs, stadiums, corridors, children play area, schools, offices, walkways, lobbies, manufacturing units etc. EPDM Rubber Flooring is an extremely durable synthetic rubber roofing membrane widely used as Safety Flooring at playgrounds to provide critical fall height protection for children on playgrounds. EPDM is poured in place on-site, providing a seamless surface. EPDM surface flooring is commonly used in kids play area as it can be designed according to the needs and it gives sufficient surface support which is important for any kids' area flooring. Wet Pour flooring can also be designed for Jogging or Running track and many court flooring including badminton court, tennis court, basketball court etc. An advantage of EPDM floor is that it can be customized accordingly whether in matter of thickness or colour or designs.



# SPORTS FLOOR



Many diverse sports are being played and it is equally important to consider the surface used for each sport. The sports flooring can be both indoors and outdoors. Sports flooring should be made to provide good shock absorption and suitable surface for each sport by reducing the injuries causing to the users. Before considering the sports floor, first of all there is a need to know about the range of sports to be performed, levels of play, extend of use, the objectives and programming facility. The flooring should be such a way that for prolonged and intensive use, it should minimize the potential of injury caused while allowing maximum sport development. It should be capable of withstanding the loads and environmental conditions and should resist the accidental damage. The surface of the sports floor should be sufficiently flat, level and consistent so that the play is unaffected by floor surface. There are many floorings that comes under sports flooring such as Football court, Badminton court, Basketball court, Volleyball court, Tennis court, Jogging & Running track etc.



# FLOOR COATINGS



Floor coatings offer unique properties and benefits that lend themselves to various applications. Several factors, such as anticipated traffic, environmental conditions and durability requirements, must be carefully taken into consideration to determine which floor coating product is most appropriate for a specific project.

**Epoxy floor coatings** are known for their hardness, durability, impact resistance, and chemical resistance. They are ideal for heavy-duty applications such as industrial facilities, warehouses, logistic centers, automotive industry heavy forklift traffic areas etc.

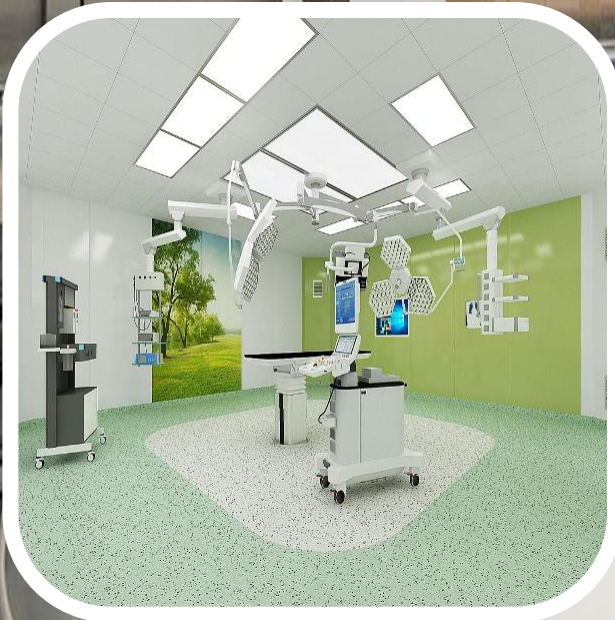
**Polyurethane floor coatings** are relatively softer, more elastic and abrasion resistant. They are suited for areas with moderate to heavy pedestrian traffic and in environments with low freezing temperatures. They are ideal for several applications, including car parks, freezing chambers and busy commercial facilities, such as shopping malls, airports and hospitals.

**Acrylic floor coatings** possess relatively fast curing times and reduces the overall labor requirements and turnaround times. They are best suited for decorative concrete, surfaces with minimal foot traffic, and areas with minimal risk of abrasions or chemical spills. Specific acrylic formulations can offer superior performance such as enhanced UV protection, slip resistance and water resistance.





# ESD & CONDUCTIVE VINYL FLOOR

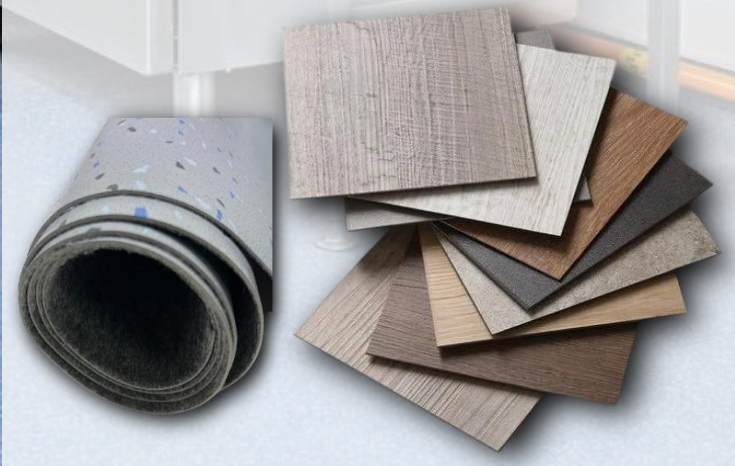
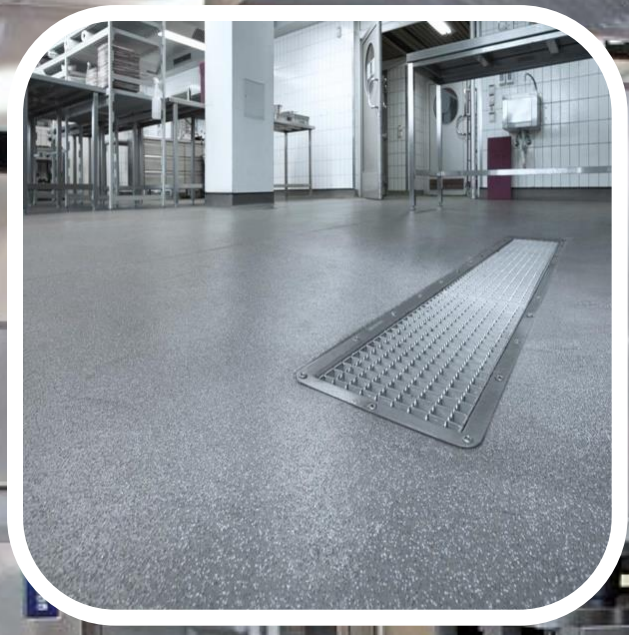


When two materials come into contact with each other and separates, a static electricity is generated. Once a charge has been established, the material become electro statically charged. This charge can be transferred from the material and has the potential to disrupt the normal operation of an electronic system and cause equipment malfunction or failure or even degrading or destroying. In such cases the flooring should be intended to prevent, remove or ground excessive static electricity charges on people, furniture, mobile carts, equipment etc. For this purpose, conductive floorings are used. Conductive floorings have low electrical resistance and thus allow static charges to flow easily across its surface. Conductive floorings are used mainly in Hospitals Operating rooms, lab rooms, computer equipment manufacturing areas, computer assembling and testing units, Clean rooms with sensitive equipment, telecommunication installation areas, medical diagnostic instrument areas, IT industries, Oil and gas industries, Automotive industries etc. where all the equipment need protection from the electric discharge that formed. Conductive floors are available as Vinyl Sheets and tiles.



# WET AREA & SAFETY FLOOR

When selecting flooring the basic thing considered are style, durability and price. But if it comes to wet areas such as bathroom, kitchen, basements, industrial kitchen etc. where there is prolonged use of water and there are chances of getting slipped something more is needed to take into consideration. The flooring should be capable of withstanding the repeated exposure to water. Also, it should be slip resistant. Water can damage the flooring if it is selected wrongly and it will be a waste of money and time to install a new floor only to find that spills and splashes have destroyed all the hard work. So, the right choice of flooring for these areas would be waterproof & slip resistant flooring. These floorings can offer better durability to the floor without losing the style, comfort and classy look of the floor. Some of the best choice of flooring for moisture prone areas of home or business are vinyl sheets which are specially designed for water prone area, SPC & LVT which are waterproof flooring etc. They are specially designed for the wet area for both residential and commercial. It is a good choice for many industrial kitchens where hygiene is also an important factor.



# SPC & LVT FLOOR



## SPC FLOOR

SPC flooring stands for Stone Polymer Composite Vinyl Flooring. Though it is similar to LVT floor, it is not completely the same. It is an upgraded version of LVT. Top layer of SPC floor protects from wear & tear, provide superior durability and waterproof performance and special UV layer provide scratch and stain resistant. Some of the benefits of SPC flooring are waterproof, fire proofing, environmentally friendly, easy installation, multiple style, great durability, easy maintenance etc. It is available in realistic wood and stone designs.

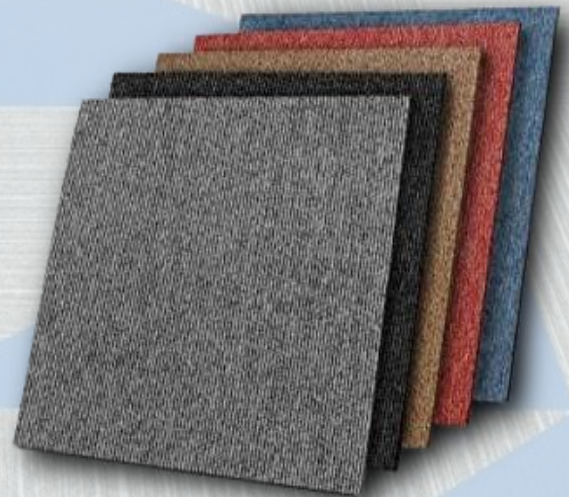
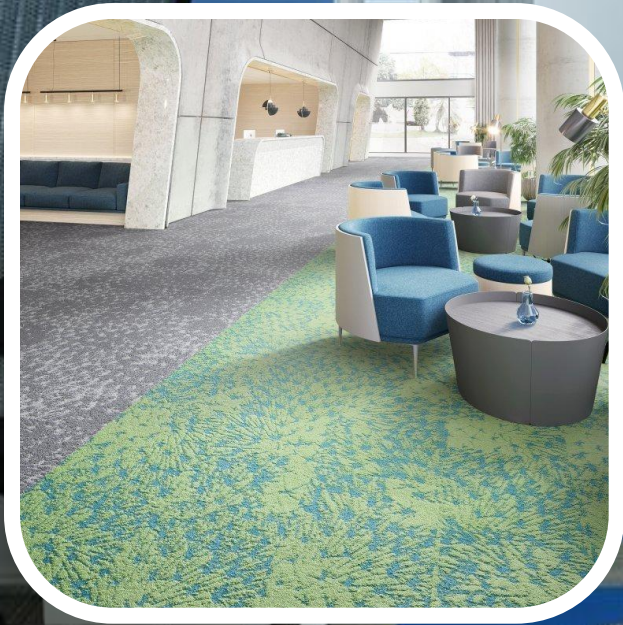
## LVT FLOOR

LVT stands for Luxury Vinyl Tile. It looks like real wood but it is far more durable than real wood. LVT is made with a series of layers which helps the product to lay flat and level. It is also flexible and waterproof. Its PVC wear layer protects the floor from everyday wear and tear and the PU surface treatment provides added protection and reduced maintenance. It is available in a range of shapes, sizes and effects which gives an authentic looking floor without the practical drawbacks of natural products.



# CARPET FLOOR

A carpet is a textile floor covering typically consisting of an upper layer of pile attached to a backing. The piles are usually made of wool and synthetic fibers such as Polypropylene, Nylon or Polyester. The biggest appeal to carpet is that it is soft and feels great beneath bare feet. This is particularly soothing in bedrooms, children's room, family rooms and living room areas. Carpet floor consists of cushions running across the entire room making damage from an accident much less. So, this can be a strong consideration in homes with small children or elderly people. Carpets are much warmer than other floors especially in chilly winter. Good carpeting with dense foam underlayment is much more comfortable than any other flooring. There are many types of carpet flooring based on how the carpet is cut and woven. Loop/Berber carpet, Pattern carpet, Texture carpet, Twist/Frieze carpet, Carpet tiles, carpet rolls, mosque carpets etc. are some of the commonly used carpets. Carpets can be made in any color by using differently dyed fibers.

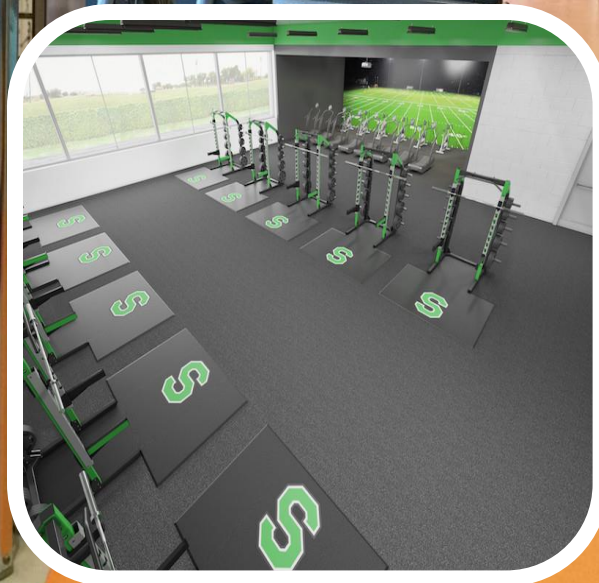


# MOSQUE CARPETS

Masjid carpets are specially designed rugs used in mosques for prayer. They serve both practical and aesthetic purposes, providing comfort for worshippers during salah (prayer). Masjid carpets often feature intricate geometric patterns, floral motifs, and calligraphy, which reflect Islamic art traditions. These designs not only enhance the beauty of the prayer space but also serve to create a serene and spiritual atmosphere. These carpets provide a soft surface for worshippers to pray on, helping to reduce discomfort during long prayer sessions. They also contribute to sound absorption, enhancing the acoustic quality of the prayer hall, which is important for clarity during recitations and sermons. Typically made from high-quality wool, nylon, or polypropylene, masjid carpets are chosen for their durability and comfort. Wool offers natural warmth and resilience, while synthetic materials provide stain resistance and ease of maintenance. Many carpets are crafted to endure heavy foot traffic, ensuring they remain in good condition over time.



# GYM & FITNESS FLOOR

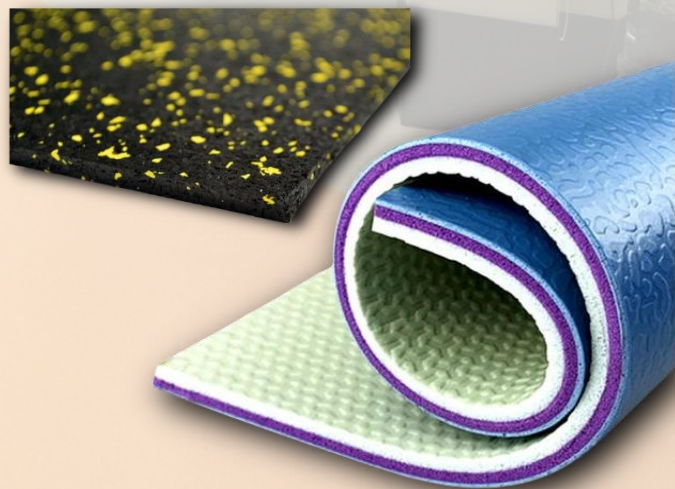


## GYM FLOOR

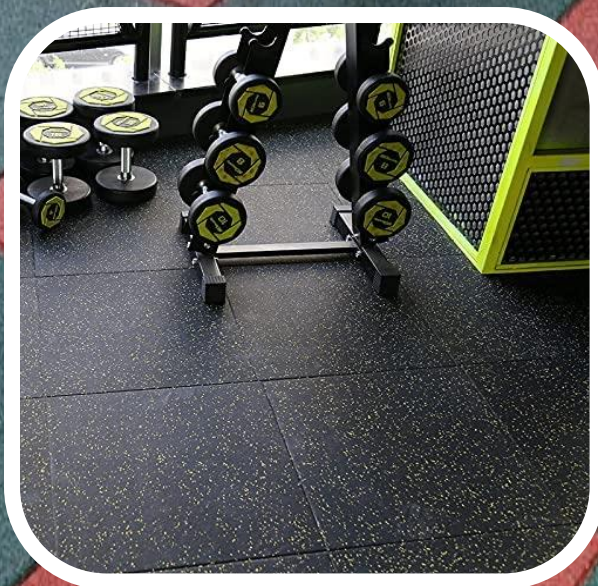
A gym is a place for various indoor activities with various fitness apparatus. Some of the important features of gym flooring should be moisture resistant, provide good level of grip and comfort, minimize the vibrations, reduce the noise impact, easy to install and maintain, cost effective etc. There are many types of flooring available for gyms such as Rubber, Wood, Vinyl etc. They are available in different colors and can be selected according as how it fit with another décor.

## FITNESS FLOOR

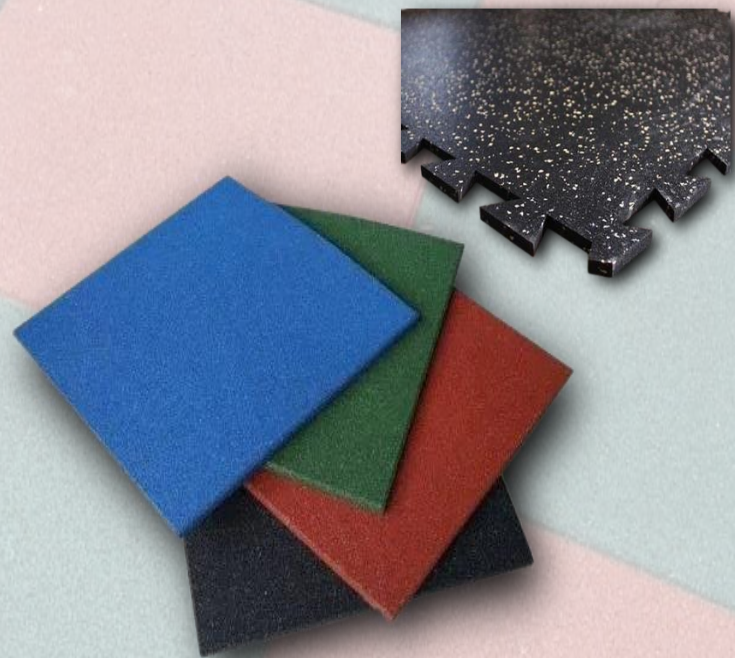
Fitness centers are those where people come for different physical activities. A fitness floor should be developed to handle heavy workout equipment, dumbbells, weight machines etc. It should provide extra shock absorption and acoustic performance for functional training areas. A fitness floor should provide anti-slip surface, give good comfort level, durable, easy to maintain, aesthetically pleasing and economical. There are many types of floorings that can be used for fitness centers according to their needs. Wood, rubber, carpet, vinyl etc. are some of them.



# RUBBER FLOOR



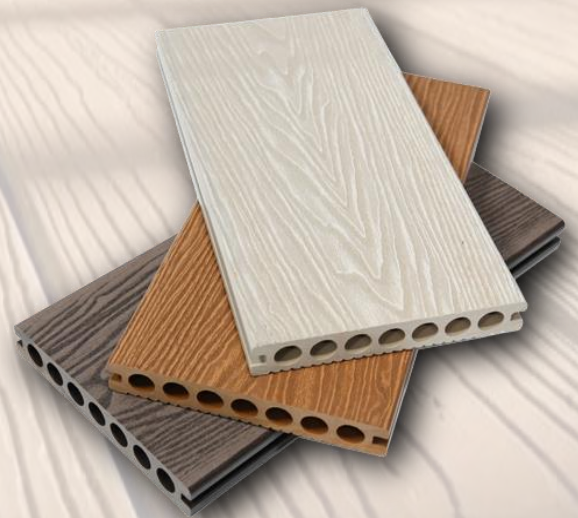
Rubber flooring is a flooring type that is quickly gaining popularity in gyms, field houses, weight rooms, homes, and commercial buildings etc. Not only rubber floors resilient, durable, and easy to maintain, they are also available in many different colors and designs to fit the décor of any space. Its durability makes it a great long-term investment. Rubber floor can withstand a high volume of foot traffic and they are also water resistant, so they won't be damaged by moisture or spills. The natural elasticity of rubber is what makes these floors so durable and resilient. They are great for absorbing impacts which is why they are popular in gyms and weight rooms. The ability to absorb impacts also makes rubber flooring an excellent option for commercial settings in which people are constantly on their feet. These floors provide more cushion than other flooring types which improves comfort and reduces injuries and fatigue. Some of the advantages of rubber flooring is they are eco-friendly, recyclable, low maintenance, good slip resistance, water, and moisture resistant etc. the advantages of rubber flooring make it a great option in a wide range of commercial and residential areas.



# WPC DECKING FLOOR



Wood Plastic Composite or WPC is a composition of plastic, wood and some additives mixed and molded in shape to form solid or hollow profiles. It is a popular choice of flooring material. It combines the properties of both wood and plastic offering a highly durable and strong material. These materials are produced from premium quality wood and other raw materials and tested under several harsh conditions to ensure the durability and strength of the material. Some of the advantages of WPC flooring is that it can withstand harsh environmental conditions like rain, sunlight, and other weather conditions, it is water resistant, slip resistant, crack resistant, easy to maintain, shock resistant, doesn't require painting, environment friendly, low maintenance, cost effective, recyclable etc. It is mainly used in outdoor areas where it is exposed to more weather conditions. WPC flooring has wide variety of residential and commercial applications. It is mainly used around pool areas where the floor has constant contact with water. Other uses of WPC flooring include patios, pergolas, fencing, garden benches etc.





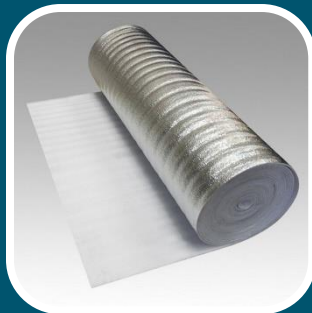
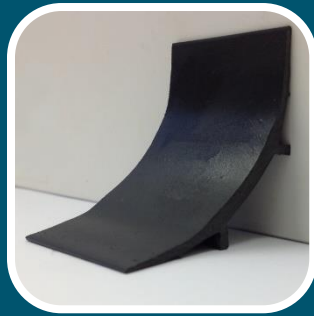
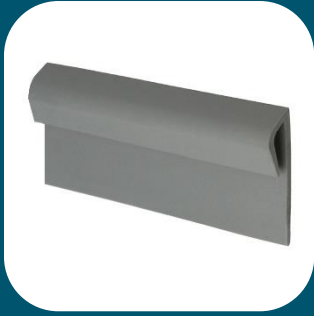
# RAISED ACCESS FLOOR



Raised floor systems, also known as access floors. Are an elevated floor structures made over a concrete or solid substrate. The most common used of a raised floor system is to tun cables, electrical wires, HVAC ducts etc. A raised floor system creates suitable gap underneath the structure which allows the repairing, rerouting or upgrading of wires and cables without affecting the construction and everyday activities. Raised floor system composed of panels which are supported by pedestals. The pedestals are fixed to the subfloor and to the panels with the help of adhesives or screws. The pedestal height can be increased or decreased according to the purpose of installation. The panels are normally composed of cement clad in steel or aluminum frame. They are readily available in different floor finishes such as wood, vinyl, stone, carpet, rubber etc. Even the final finish can be customized accordingly by installing the bare panels and the top floor finishes as wood, vinyl, carpet etc. according to the choice. Raised floors are mainly used in data centers and telecommunication facilities where there is more usage of wires and network cables.



# UNDERLAYS & ACCESSORIES

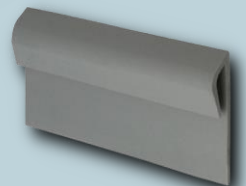
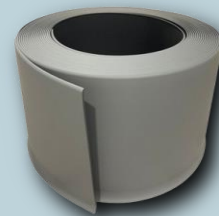


## UNDERLAYS

Underlay or underlayment is generally referring to a thin layer of cushioning made of materials such as sponge, rubber, foam, crumb rubber or recycled plastic. This material is laid underneath any other surfaces such as wood, carpet, vinyl, tiles etc. It is generally used to level the sub-floor before the installation of main floor. It also has noise dampening properties.

## ACCESSORIES

Flooring accessories include Skirting, Profiles, Self-leveling compounds & Primers, Adhesives etc. Apart from decorative purpose Skirtings are used to protect the wall and hide any uneven floor or wall edges. Skirtings can be wood, SPC, PVC etc. Profiles provide infinite solutions for indoor and outdoor finishes and are available in various width and depths. Self-leveling compounds are used to level the subfloor. Primers are those which are applied to the sub-floor before the self-leveling. Adhesives are those which are used in the subfloor to install the main floor.





**ZAYAANCO**

*A Complete Flooring Store.....*

[www.zayaanco.com](http://www.zayaanco.com)

[info@zayaanco.com](mailto:info@zayaanco.com)