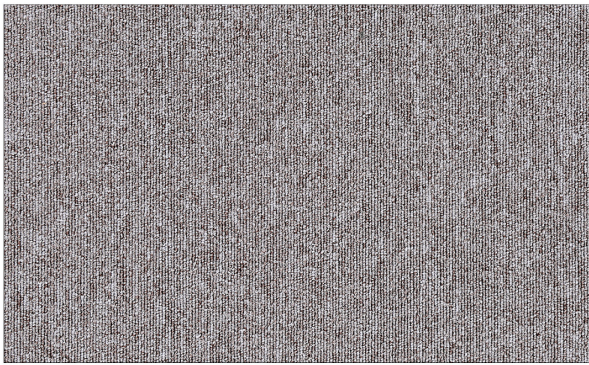
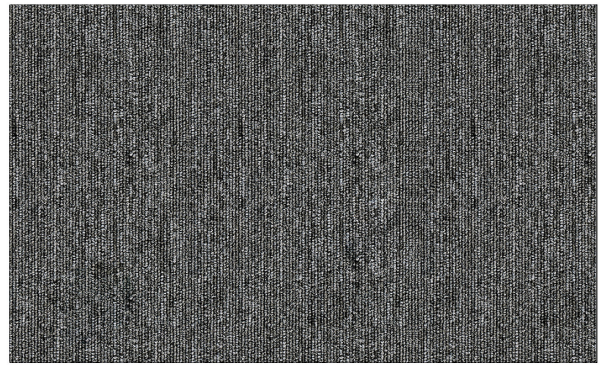




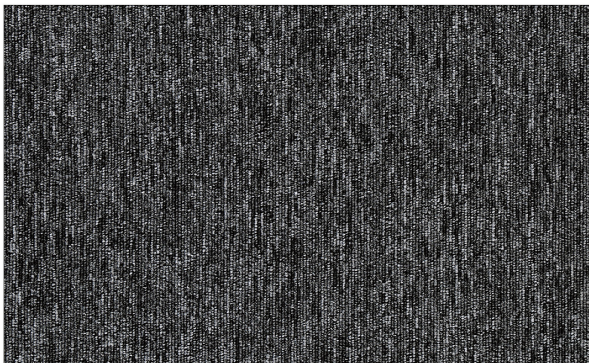
SOFINA  
CARPET TILE



**Beige 11-100001**



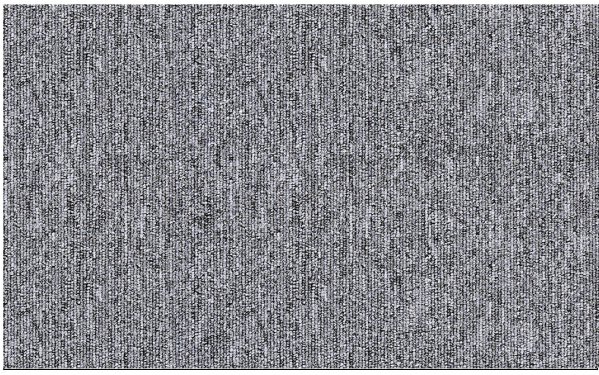
**Grey 11-100002**



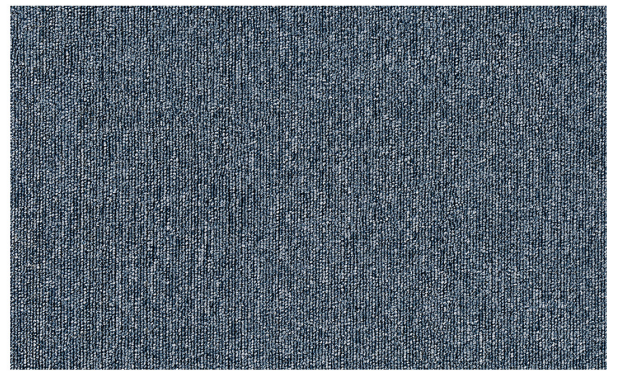
**Dark Grey 11-100003**



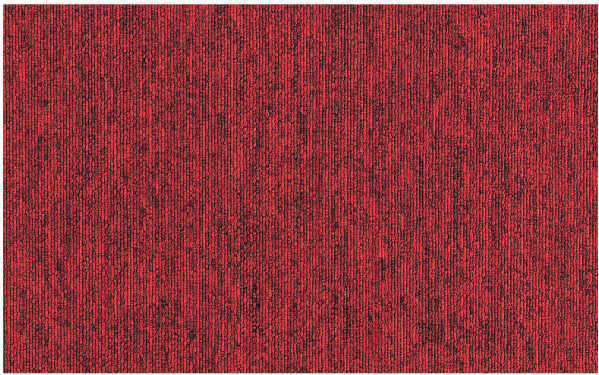
**Charcoal 11-100004**



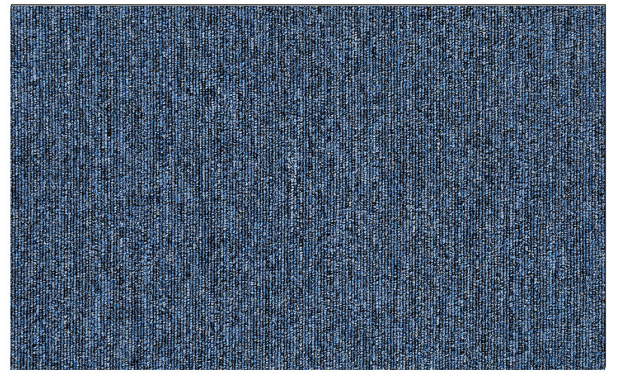
**Light Grey 11-100005**



**Light Blue 11-100006**



**Red 11-100007**



**Blue 11-100008**





## SPECIFICATION

### SOFINA SERIES

Construction: Loop pile

Tufting Gauge: 1/10"

Pile Weight: 380g/sqm

Pile Height: 3.5+/-0.5mm

Tile size: 50x50cm

Pile fiber composition: 100%pp

Dye method: solution dyed

Total weight 2600g/sqm+/-3%

Total thickness: approx 5.0mm

Backing Structure: Bitumen

### DISCLAIMERS:

1. ACCORDING TO INTERNATIONAL CARPET MANUFACTURING STANDARDS, COLORS MAY VARY SLIGHTLY BETWEEN DYE LOTS, WITHIN AN ACCEPTABLE TOLERANCE RANGE.
2. PLEASE ENSURE THE DYE LOT NUMBER IS RECORDED ON THE CARTONS PRIOR TO INSTALLATION.

